

## S.C. Reversible Motor 90W (□90mm)

# 90W

Speed Control  
Reversible Motor  
90W(□90mm)

### Motor Specification

Model 9SRDG*-90F2□: Gear Type Shaft 9SRDD*-90F2: D-Cut Type Shaft 9SRDK*-90F2: Key Type Shaft	Output W	Voltage V	Frequency Hz	Poles	Duty	Speed Range r/min	Starting Torque		Permissible Torque				Capacitor μF / VAC
							kgfcm	N.m	1200r/min		90r/min		
									kgfcm	N.m	kgfcm	N.m	
9SRDGA-90F2□	90	1∅110	60	4	30min.	90-1700	6.50	0.650	6.30	0.630	3.00	0.300	25.0 / 250
9SRDGD-90F2□	90	1∅220	60	4	30min.	90-1700	6.50	0.650	6.30	0.630	3.00	0.300	6.0 / 400
9SRDGE-90F2□	90	1∅220	50	4	30min.	90-1400	4.60	0.460	5.40	0.540	2.20	0.220	6.0 / 400
		5.50					0.550	6.10	0.610	2.20	0.220		

1) Enter the phase & voltage code in the place \* and enter the model type of attaching Gearbox in the box (□) within the motor model name.

2) All models contain a built-in thermal protector.

3) Gear Type Shaft are for attaching Gearbox and D-Cut & Key Type Shaft are for using motor only.

### Max. Permissible Torque at Output Shaft of Gearbox

Motor Model	Gearbox Model	r/min	V	Hz	Gear Ratio	2	3	3.6	5	6	7.5	9	12.5	15	18	20
9SRDG□ -90F2P	9PBK□BH	1200	110	60	kgfcm N.m	10.5 1.02	15.7 1.54	18.8 1.84	26.1 2.56	31.4 3.07	39.2 3.84	47.1 4.61	59.1 5.79	70.9 6.95	85.1 8.33	85.7 8.40
			220	60	kgfcm N.m	10.5 1.02	15.7 1.54	18.8 1.84	26.1 2.56	31.4 3.07	39.2 3.84	47.1 4.61	59.1 5.79	70.9 6.95	85.1 8.33	85.7 8.40
		220/ 240	50	kgfcm N.m	10.1 0.99	15.2 1.49	18.2 1.79	25.3 2.48	30.4 2.98	38.0 3.72	45.6 4.47	57.2 5.60	68.6 6.73	82.4 8.07	83.0 8.13	
	9PFB□BH	90	110	60	kgfcm N.m	5.0 0.49	7.5 0.73	9.0 0.88	12.5 1.22	14.9 1.46	18.7 1.83	22.4 2.20	28.1 2.76	33.8 3.31	40.5 3.97	40.8 4.00
			220	60	kgfcm N.m	5.0 0.49	7.5 0.73	9.0 0.88	12.5 1.22	14.9 1.46	18.7 1.83	22.4 2.20	28.1 2.76	33.8 3.31	40.5 3.97	40.8 4.00
		220/ 240	50	kgfcm N.m	3.7 0.36	5.5 0.54	6.6 0.64	9.1 0.89	11.0 1.07	13.7 1.34	16.4 1.61	20.6 2.02	24.8 2.43	29.7 2.91	29.9 2.93	

Motor Model	Gearbox Model	r/min	V	Hz	Gear Ratio	25	30	36	40	50	60	75	90	100	120	150	180	200		
9SRDG□ -90F2P	9PBK□ BH	1200	110	60	kgfcm N.m	107.1 10.50	128.5 12.59	154.2 15.11	171.4 16.79	200.0 19.60	200.0 19.60	200.0 19.60	200.0 19.60	200.0 19.60	200.0 19.60	200.0 19.60	200.0 19.60	200.0 19.60	200.0 19.60	
			220	60	kgfcm N.m	107.1 10.50	128.5 12.59	154.2 15.11	171.4 16.79	200.0 19.60	200.0 19.60	200.0 19.60	200.0 19.60	200.0 19.60	200.0 19.60	200.0 19.60	200.0 19.60	200.0 19.60	200.0 19.60	200.0 19.60
		220/ 240	50	kgfcm N.m	103.7 10.16	124.4 12.20	149.3 14.63	165.9 16.26	200.0 19.60	200.0 19.60	200.0 19.60	200.0 19.60	200.0 19.60	200.0 19.60	200.0 19.60	200.0 19.60	200.0 19.60	200.0 19.60	200.0 19.60	200.0 19.60
	9PFB□BH	90	110	60	kgfcm N.m	51.0 5.00	61.2 6.00	73.4 7.20	81.6 8.00	102.0 10.00	122.4 12.00	137.3 13.45	164.7 16.14	183.0 17.93	200.0 19.60	200.0 19.60	200.0 19.60	200.0 19.60	200.0 19.60	200.0 19.60
			220	60	kgfcm N.m	51.0 5.00	61.2 6.00	73.4 7.20	81.6 8.00	102.0 10.00	122.4 12.00	137.3 13.45	164.7 16.14	183.0 17.93	200.0 19.60	200.0 19.60	200.0 19.60	200.0 19.60	200.0 19.60	200.0 19.60
		220/ 240	50	kgfcm N.m	37.4 3.67	44.9 4.40	53.9 5.28	59.8 5.86	74.8 7.33	89.8 8.80	100.7 9.86	120.8 11.84	134.2 13.15	161.0 15.78	200.0 19.60	200.0 19.60	200.0 19.60	200.0 19.60	200.0 19.60	200.0 19.60

1) Enter the phase & voltage code in the box (□) within the motor model name.

2) Enter the gear ratio in the box (□) within the Gearbox model name.

3) A colored background indicates gear shaft rotation in the same direction as the motor shaft; a white background indicates rotation in the opposite direction.

4) The rotating speed is calculated by dividing the motor's synchronous speed (50Hz: 1,500r/min, 60Hz: 1,800r/min) by the gear ratio.

The actual speed is 2-20% less than the displayed value, depending on the size of the load.

# B AC Motors

## S.C. Reversible Motor 90W (□90mm)

### Max. Permissible Torque at Output Shaft of Gearbox

Motor Model	Gearbox Model	r/min	V	Hz	Gear Ratio	3	3.6	6	9	12.5	15	18	20	25	30	36	50	60	75	90	100	120	150	180	200	
9SRDG□ -90F2H	9HBK □BH 9HFK □BH	1200	110	60	kgfcm	15.7	18.8	31.4	47.1	59.1	70.9	85.1	85.7	107.1	128.5	154.2	214.2	257.0	288.2	300.0	300.0	300.0	300.0	300.0	300.0	300.0
					N.m	1.54	1.84	3.07	4.61	5.79	6.95	8.33	8.40	10.50	12.59	15.11	20.99	25.19	28.25	29.40	29.40	29.40	29.40	29.40	29.40	29.40
			220	60	kgfcm	15.7	18.8	31.4	47.1	59.1	70.9	85.1	85.7	107.1	128.5	154.2	214.2	257.0	288.2	300.0	300.0	300.0	300.0	300.0	300.0	300.0
		N.m	1.54	1.84	3.07	4.61	5.79	6.95	8.33	8.40	10.50	12.59	15.11	20.99	25.19	28.25	29.40	29.40	29.40	29.40	29.40	29.40	29.40	29.40	29.40	29.40
		220/240	50	kgfcm	15.2	18.2	30.4	45.6	57.2	68.6	82.4	83.0	103.7	124.4	149.3	207.4	248.9	279.1	300.0	300.0	300.0	300.0	300.0	300.0	300.0	300.0
		N.m	1.49	1.79	2.98	4.47	5.60	6.73	8.07	8.13	10.16	12.20	14.63	20.33	24.39	27.35	29.40	29.40	29.40	29.40	29.40	29.40	29.40	29.40	29.40	29.40
90	110	60	kgfcm	7.5	9.0	14.9	22.4	28.1	33.8	40.5	40.8	51.0	61.2	73.4	102.0	122.4	137.3	164.7	183.0	219.6	274.5	300.0	300.0	300.0	300.0	
			N.m	0.73	0.88	1.46	2.20	2.76	3.31	3.97	4.00	5.00	6.00	7.20	10.00	12.00	13.45	16.14	17.93	21.52	26.90	29.40	29.40	29.40	29.40	
	220	60	kgfcm	7.5	9.0	14.9	22.4	28.1	33.8	40.5	40.8	51.0	61.2	73.4	102.0	122.4	137.3	164.7	183.0	219.6	274.5	300.0	300.0	300.0		
	N.m	0.73	0.88	1.46	2.20	2.76	3.31	3.97	4.00	5.00	6.00	7.20	10.00	12.00	13.45	16.14	17.93	21.52	26.90	29.40	29.40	29.40	29.40	29.40		
	220/240	50	kgfcm	5.5	6.6	11.0	16.4	20.6	24.8	29.7	29.9	37.4	44.9	53.9	74.8	89.8	100.7	120.8	134.2	161.0	201.3	241.6	241.6	241.6		
	N.m	0.54	0.64	1.07	1.61	2.02	2.43	2.91	2.93	3.67	4.40	5.28	7.33	8.80	9.86	11.84	13.15	15.78	19.73	23.67	23.67	23.67	23.67	23.67		

Motor Model	Gearbox Model	r/min	V	Hz	Gear Ratio	10	12	15	18	25	30	36	50	60
9SRDG□ -90F2W	9WD□BL/ □BR/□BRL	1200	110	60	kgfcm	51.7	60.5	72.8	83.9	110.3	124.7	145.2	142.9	122.4
					N.m	5.06	5.93	7.13	8.22	10.80	12.22	14.22	14.00	12.00
			220	60	kgfcm	51.7	60.5	72.8	83.9	110.3	124.7	145.2	142.9	122.4
		N.m	5.06	5.93	7.13	8.22	10.80	12.22	14.22	14.00	12.00			
		220/240	50	kgfcm	50.0	58.6	70.5	81.3	106.8	120.8	140.5	142.9	122.4	
		N.m	4.90	5.74	6.90	7.96	10.46	11.84	13.77	14.00	12.00			
90	110	60	kgfcm	24.6	28.8	34.7	40.0	52.5	59.4	69.1	90.0	99.0		
			N.m	2.41	2.82	3.40	3.92	5.15	5.82	6.77	8.82	9.70		
	220	60	kgfcm	24.6	28.8	34.7	40.0	52.5	59.4	69.1	90.0	99.0		
N.m	2.41	2.82	3.40	3.92	5.15	5.82	6.77	8.82	9.70					
220/240	50	kgfcm	18.0	21.1	25.4	29.3	38.5	43.6	50.7	66.0	72.6			
N.m	1.77	2.07	2.49	2.87	3.77	4.27	4.97	6.47	7.11					

Motor Model	Gearbox Model	r/min	V	Hz	Gear Ratio	7.5	10	15	20	25	30	40	50	60	80
9SRDG□ -90F2WH	9WHD□ -030	1200	110	60	kgfcm	39.7	51.0	71.8	90.7	104.0	121.0	148.7	170.1	163.3	132.7
					N.m	3.89	5.00	7.04	8.89	10.19	11.85	14.57	16.67	16.00	13.00
			220	60	kgfcm	39.7	51.0	71.8	90.7	104.0	121.0	148.7	170.1	163.3	132.7
		N.m	3.89	5.00	7.04	8.89	10.19	11.85	14.57	16.67	16.00	13.00			
		220/240	50	kgfcm	38.4	49.4	69.5	87.8	100.7	117.1	144.0	164.7	163.3	132.7	
		N.m	3.77	4.84	6.81	8.61	9.86	11.48	14.11	16.14	16.00	13.00			
90	110	60	kgfcm	18.9	24.3	34.2	43.2	49.5	57.6	70.8	81.0	90.0	105.6		
			N.m	1.85	2.38	3.35	4.23	4.85	5.64	6.94	7.94	8.82	10.35		
	220	60	kgfcm	18.9	24.3	34.2	43.2	49.5	57.6	70.8	81.0	90.0	105.6		
N.m	1.85	2.38	3.35	4.23	4.85	5.64	6.94	7.94	8.82	10.35					
220/240	50	kgfcm	13.9	17.8	25.1	31.7	36.3	42.2	51.9	59.4	66.0	77.4			
N.m	1.36	1.75	2.46	3.10	3.56	4.14	5.09	5.82	6.47	7.59					

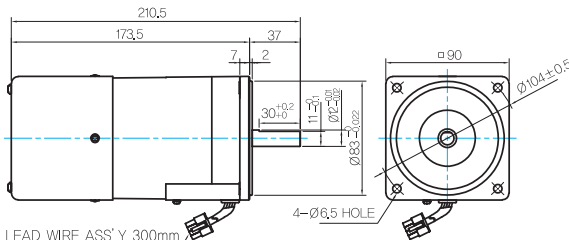
### Motor Images



## Dimensions

### MOTOR ONLY

- MOTOR MODEL:  
9SRDD□-90F2 (POWERFUL FAN)



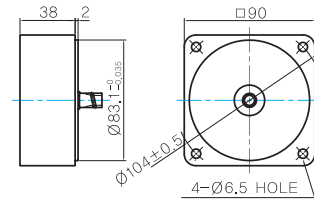
LEAD WIRE ASS'Y 300mm  
MOTOR UL STYLE NO,3271 AWG NO,22  
T,G UL STYLE NO,1430 AWG NO,24

- MOTOR OUTPUT SHAFT
- KEY SPEC

MODEL	SPEC	MOTOR
D-CUT TYPE 9SRDD□-90F2		
KEY TYPE 9SRDK□-90F2		

### INTER-DECIMAL GEARBOX

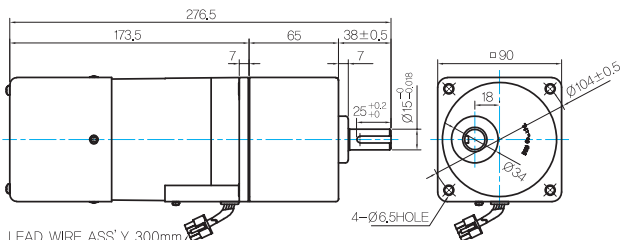
- MODEL: 9XD10□□



### GEARED MOTOR

#### P TYPE GEARBOX

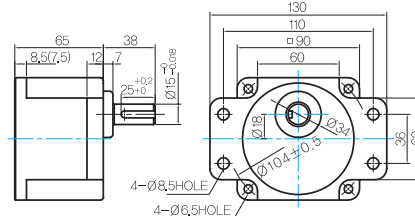
- MOTOR MODEL:  
9SRDG□-90F2P (POWERFUL FAN)



LEAD WIRE ASS'Y 300mm  
MOTOR UL STYLE NO,3271 AWG NO,22  
T,G UL STYLE NO,1430 AWG NO,24

- GEARBOX MODEL:  
9PBK□BH

- GEARBOX MODEL:  
9PFK□BH



- GEARBOX OUTPUT SHAFT

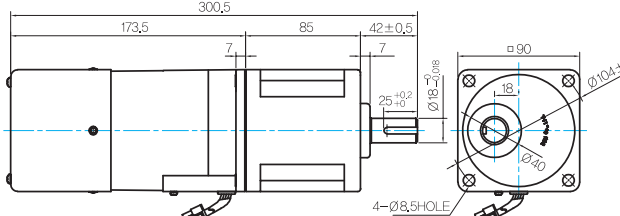
MODEL	SPEC
KEY TYPE 9PBK□BH 9PFK□BH	

- KEY SPEC

GEARBOX

#### H TYPE GEARBOX

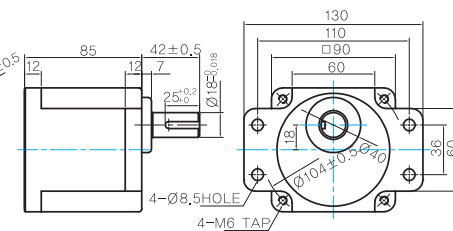
- MOTOR MODEL:  
9SRDG□-90F2H (POWERFUL FAN)



LEAD WIRE ASS'Y 300mm  
MOTOR UL STYLE NO,3271 AWG NO,22  
T,G UL STYLE NO,1430 AWG NO,24

- GEARBOX MODEL:  
9HBK□BH

- GEARBOX MODEL:  
9HFK□BH



- GEARBOX OUTPUT SHAFT

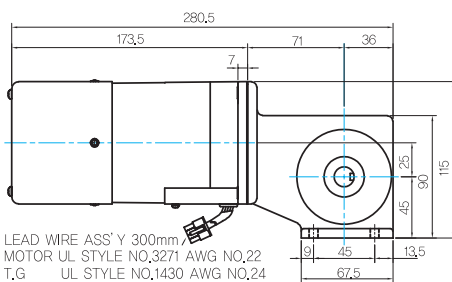
MODEL	SPEC
KEY TYPE 9HBK□BH 9HFK□BH	

- KEY SPEC

GEARBOX

#### W TYPE GEARBOX

- MOTOR MODEL:  
9SRDG□-90F2W (POWERFUL FAN)



LEAD WIRE ASS'Y 300mm  
MOTOR UL STYLE NO,3271 AWG NO,22  
T,G UL STYLE NO,1430 AWG NO,24

- GEARBOX MODEL:  
9WD□BL/BR/BRL

- KEY SPEC

GEARBOX

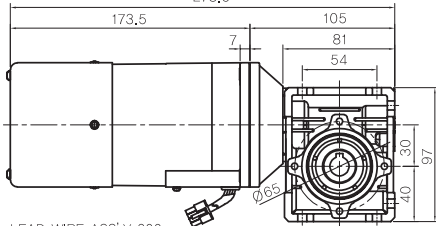
# B AC Motors

## S.C. Reversible Motor 90W (□90mm)

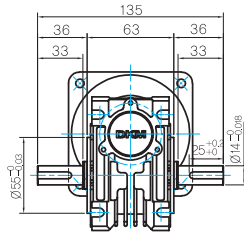
### Dimensions

#### WH TYPE GEARBOX

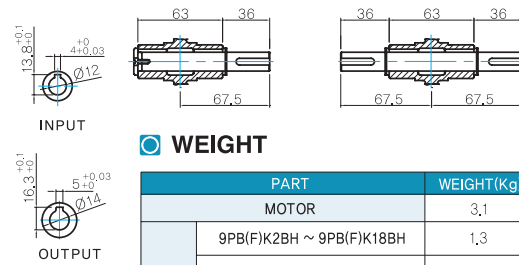
- MOTOR MODEL:  
9SRDG□-90F2WH (POWERFUL FAN)  
278,5



- GEARBOX MODEL:  
9WHD□-030



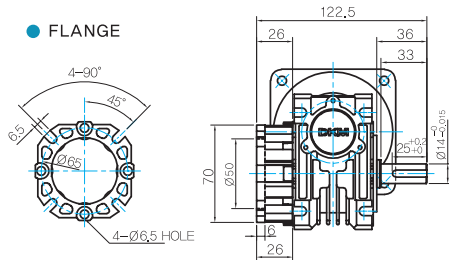
- SHAFT(Unidirectional, Bi-directional)



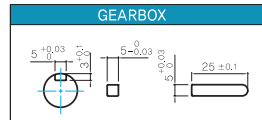
#### WEIGHT

	PART	WEIGHT(Kg)
	MOTOR	3,1
GEAR BOX	9PB(F)K2BH ~ 9PB(F)K18BH	1,3
	9PB(F)K20BH ~ 9PB(F)K200BH	1,4
	9HB(F)K3BH ~ 9HB(F)K9BH	1,45
	9HB(F)K12.5BH ~ 9HB(F)K18BH	1,5
	9HB(F)K20BH ~ 9HB(F)K60BH	1,7
	9HB(F)K75BH ~ 9HB(F)K200BH	1,8
	9WD□BL/BR/BRL	1,0
	9WHD□-030	1,13
	9XD10□□	0,5

#### FLANGE



#### KEY SPEC



\* The output flange and shafts are sold separately.