

B AC Motors

S.C. Induction Motor 180W (□90mm)

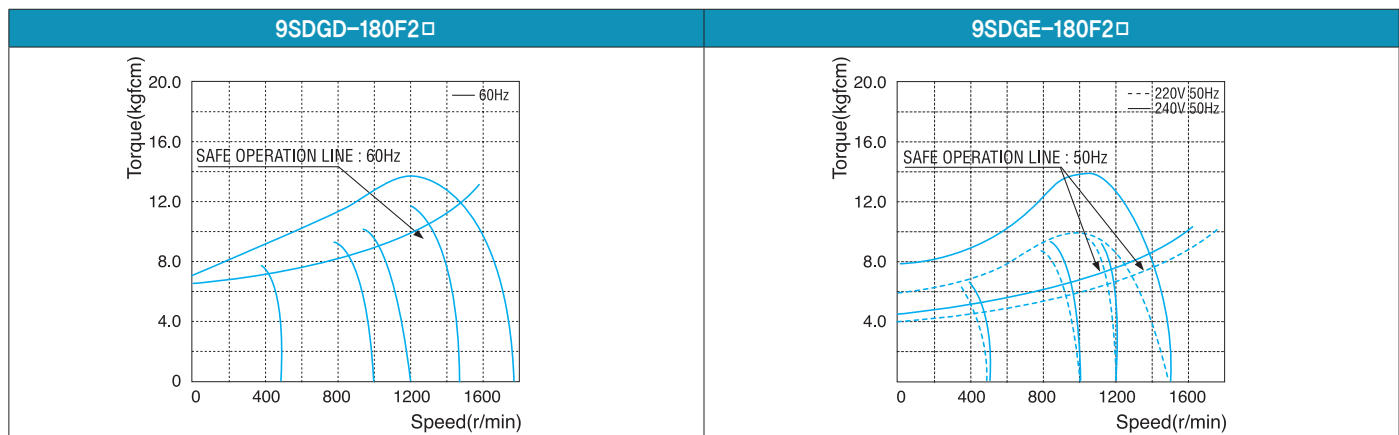
180W Speed Control Induction Motor 180W(□90mm)

Motor Specification

Model 9SDG*-180F2□: Gear Type Shaft 9SDD*-180F2: D-Cut Type Shaft 9SDK*-180F2: Key Type Shaft	Output W	Voltage V	Frequency Hz	Poles	Duty	Speed Range r/min	Starting Torque		Permissible Torque				Capacitor μF / VAC
									1200r/min		90r/min		
									kgfcm	N.m	kgfcm	N.m	
9SDGD-180F2□	180	1φ220	60	4	Cont.	90-1700	8.40	0.840	10.00	1.000	6.60	0.660	8.0 / 400
9SDGE-180F2□	180	1φ220	50	4	Cont.	90-1400	6.20	0.620	10.00	1.000	6.60	0.660	8.0 / 400
		7.10					0.710	12.00	1.200	7.50	0.750		

- 1) Enter the phase & voltage code in the place * and enter the model type of attaching Gearbox in the box (□) within the motor model name.
- 2) All models contain a built-in thermal protector.
- 3) Gear Type Shaft are for attaching Gearbox and D-Cut & Key Type Shaft are for using motor only.

Speed-Torque Characteristics



Max. Permissible Torque at Output Shaft of Gearbox

Motor Model	Gearbox Model	r/min	V	Hz	Gear Ratio	3	3.6	6	9	12.5	15	18	20	25	30	36	50	60	75	90	100	120	150	180	200		
9SDG□ -180F2H	9HBK□ BH	1200	220	60	kgfcm	24.9	29.9	49.8	74.7	93.8	112.5	135.0	136.0	170.0	204.0	244.8	300.0	300.0	300.0	300.0	300.0	300.0	300.0	300.0	300.0	300.0	
					N.m	2.44	2.93	4.88	7.32	9.19	11.03	13.23	13.33	16.66	19.99	23.99	29.40	29.40	29.40	29.40	29.40	29.40	29.40	29.40	29.40	29.40	29.40
	9HFK□ BH	90	220	60	kgfcm	16.4	19.7	32.9	49.3	61.9	74.3	89.1	89.8	112.2	134.6	161.6	224.4	269.3	300.0	300.0	300.0	300.0	300.0	300.0	300.0	300.0	300.0
					N.m	1.61	1.93	3.22	4.83	6.06	7.28	8.73	8.80	11.00	13.19	15.83	21.99	26.39	29.40	29.40	29.40	29.40	29.40	29.40	29.40	29.40	29.40
9SDG□ -180F2WH	9WHD□-030	1200	220	60	kgfcm	18.7	22.4	37.4	56.0	70.3	84.4	101.3	102.0	127.5	153.0	183.6	255.0	300.0	300.0	300.0	300.0	300.0	300.0	300.0	300.0	300.0	300.0
					N.m	1.83	2.20	3.66	5.49	6.89	8.27	9.92	10.00	12.50	14.99	17.99	24.99	29.40	29.40	29.40	29.40	29.40	29.40	29.40	29.40	29.40	29.40
	9WHD□-040	90	220	60	kgfcm	41.6	53.5	75.2	95.0	108.9	126.7	155.8	173.5	173.5	183.7	183.7	183.7	183.7	183.7	183.7	183.7	183.7	183.7	183.7	183.7	183.7	183.7
					N.m	4.07	5.24	7.37	9.31	10.67	12.42	15.26	17.00	17.00	17.00	17.00	17.00	17.00	17.00	17.00	17.00	17.00	17.00	17.00	17.00	17.00	17.00
9WHD□-040	90	220/240	50	kgfcm	47.3	60.8	85.5	108.0	123.8	144.0	177.0	173.5	163.3	132.7	132.7	132.7	132.7	132.7	132.7	132.7	132.7	132.7	132.7	132.7	132.7	132.7	132.7
				N.m	4.63	5.95	8.38	10.58	12.13	14.11	17.35	17.00	17.00	17.00	16.00	13.00	13.00	13.00	13.00	13.00	13.00	13.00	13.00	13.00	13.00	13.00	13.00

- 1) Enter the phase & voltage code in the box (□) within the motor model name.
- 2) Enter the gear ratio in the box (□) within the Gearbox model name.
- 3) A colored background indicates gear shaft rotation in the same direction as the motor shaft; a white background indicates rotation in the opposite direction.
- 4) The rotating speed is calculated by dividing the motor's synchronous speed (50Hz: 1,500r/min, 60Hz: 1,800r/min) by the gear ratio. The actual speed is 2~20% less than the displayed value, depending on the size of the load.

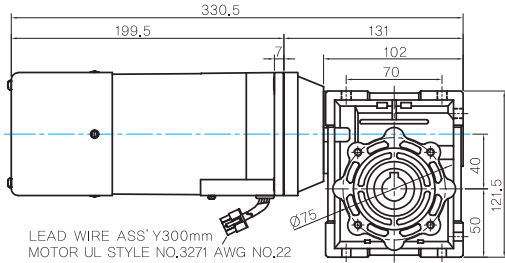
Motor Model	Gearbox Model	r/min	V	Hz	Gear Ratio	7.5	10	15	20	25	30	40	50	60	80
9SDG□ -180F2WH	9WHD□-030	1200	220	60	kgfcm	63.0	81.0	114.0	144.0	165.0	192.0	183.7	173.5	163.3	132.7
					N.m	6.17	7.94	11.17	14.11	16.17	18.82	18.00	17.00	16.00	13.00
	9WHD□-040	90	220/240	50	kgfcm	75.6	97.2	136.8	172.8	198.0	204.1	183.7	173.5	163.3	132.7
					N.m	7.41	9.53	13.41	16.93	19.40	20.00	18.00	17.00	16.00	13.00
9WHD□-040	90	220	60	kgfcm	41.6	53.5	75.2	95.0	108.9	126.7	155.8	173.5	163.3	132.7	
				N.m	4.07	5.24	7.37	9.31	10.67	12.42	15.26	17.00	16.00	13.00	
9WHD□-040	90	220/240	50	kgfcm	47.3	60.8	85.5	108.0	123.8	144.0	177.0	173.5	163.3	132.7	
				N.m	4.63	5.95	8.38	10.58	12.13	14.11	17.35	17.00	16.00	13.00	

B AC Motors

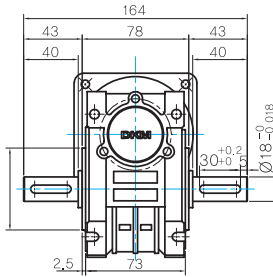
S.C. Induction Motor 180W (□90mm)

Dimensions

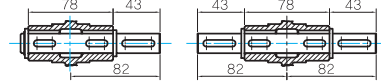
- MOTOR MODEL:
9SDG□-180F2WH (GENERAL FAN)



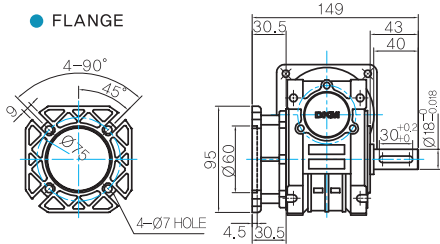
- GEARBOX MODEL:
9WHD□-040



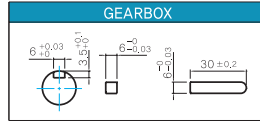
- SHAFT(Unidirectional, Bi-directional)



- FLANGE



- KEY SPEC



WEIGHT

PART		WEIGHT(Kg)
MOTOR		3,0
GEAR BOX	9HB(F)K3BH ~ 9HB(F)K9BH	1,45
	9HB(F)K12.5BH ~ 9HB(F)K18BH	1,5
	9HB(F)K20BH ~ 9HB(F)K60BH	1,7
	9HB(F)K75BH ~ 9HB(F)K200BH	1,8
	9WHD□-030	1,13
9WHD□-040		2,2
9XD10□		0,5

* The output flange and shafts are sold separately.

Motor Images

