

B AC Motors

Induction Motor 400W(□104mm)

400W

 Induction Motor
400W(□104mm)

Motor Specification

Model		Output W	Voltage V	Frequency Hz	Poles	Duty	Starting Torque		Rated Load			Capacitor μF / VAC	
Lead Wire Type	Terminal Box Type						kgfcm N.m	Speed r/min	Current A	Torque kgfcm N.m			
-	10IDG6-400F□-T	400	3∅ 220	60	4	Cont.	47.00	4.700	1600	2.10	24.35	2.435	-
			3∅ 380				47.00	4.700	1600	1.21	24.35	2.435	

1) Enter the phase & voltage code in the place * and enter the model type of attaching gearbox in the box (□) within the motor model name.

2) voltage code E & D contain a built-in thermal protector.

3) Gear Type Shaft is for attaching gearbox and D-Cut & Key Type Shafts are for using motor only.

※ It is not possible to use inverter for three phase 380~440V motor. When inverter is used, the insulation of winding coil becomes hot and may cause damage to the motor.

Max. Permissible Torque at Output Shaft of Gearbox

60Hz

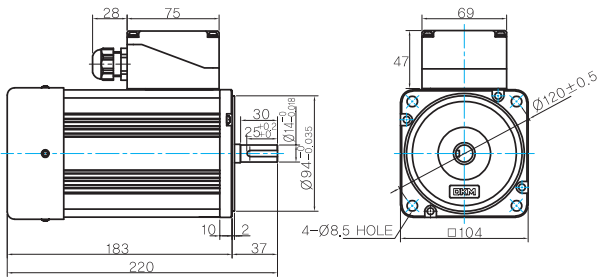
Motor Model	Gearbox Model	Ratio r/min	3 600	3.6 500	5 360	6 300	7.5 240	9 200	10 180	12.5 144	15 120	18 100	20 90	25 72	30 60	36 50	40 45	50 36	60 30	75 24	90 20	100 18	120 15	150 12	180 10
10IDG6-400FU-T	10UBK□ BH	kgfcm N.m	60 5.9	75 7.4	100 9.8	120 12	150 15	180 18	185 18	225 22	275 27	300 29	300 29	300 29	300 29	350 34	350 34	350 34	400 39	400 39	400 39	400 39	400 39	400 39	400 39

Motor Model	Gearbox Model	Gear Ratio r/min	7.5 200	10 150	15 100	20 75	25 60	30 50	40 37.5	50 30	60 25	80 18.75	100 15
10IDG6-400FWH-T	10WHD□-040	kgfcm N.m	125 12.20	160 15.60	230 22.50	295 28.90	355 34.80	395 38.70	375 36.70	*	*	*	*

Dimensions

MOTOR ONLY

MOTOR MODEL:
10IDK6-400F-T



MOTOR OUTPUT SHAFT

MODEL	SPEC
KEY TYPE	

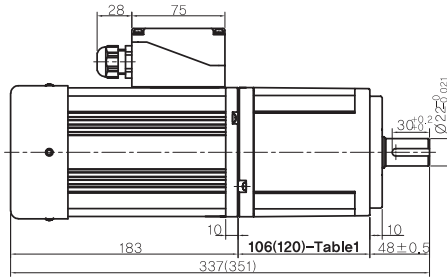
KEY SPEC

MOTOR

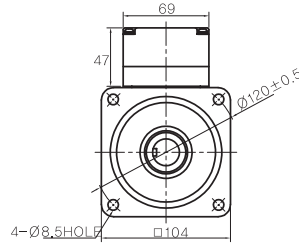
GEARED MOTOR

U TYPE GEARBOX

MOTOR MODEL:
10IDG6-400FU-T



GEARBOX MODEL:
10UBK□BH



GEARBOX OUTPUT SHAFT

MODEL	SPEC
KEY TYPE	

KEY SPEC

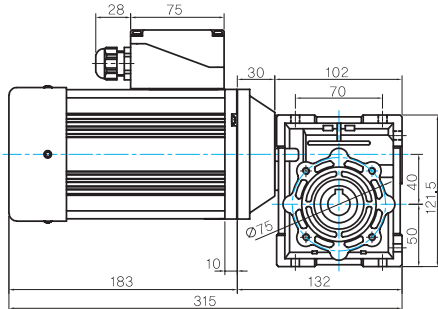
GEARBOX

106(120)-Table1

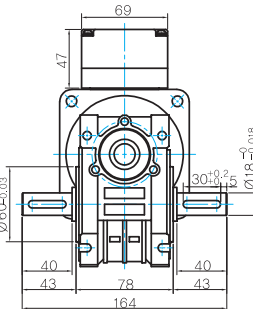
SIZE(mm)	GEAR RATIO
106	10UBK3BH - 10UBK60BH
120	10UBK75BH - 10UBK180BH

WH TYPE GEARBOX

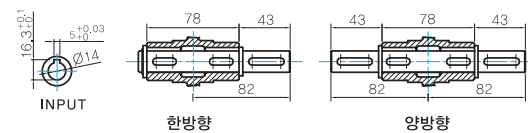
MOTOR MODEL:
10IDG6-400FWH-T



GEARBOX MODEL:
10WHD□-040



SHAFT

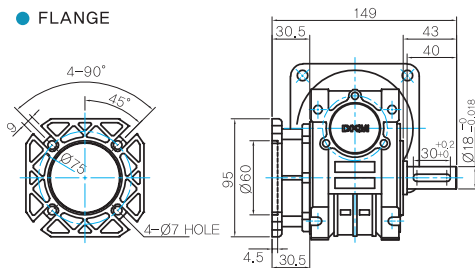


WEIGHT

PART	WEIGHT(Kg)	
MOTOR	6.1	
GEAR BOX	10UBK3BH ~ 10UBK10BH	2.1
	10UBK12.5BH ~ 10UBK18BH	2.15
	10UBK20BH ~ 10UBK60BH	2.2
	10UBK75BH ~ 10UBK200BH	2.3
	10WHD□-040	2.2

* 출력 FLANGE와 SHAFT는 별매입니다.

FLANGE



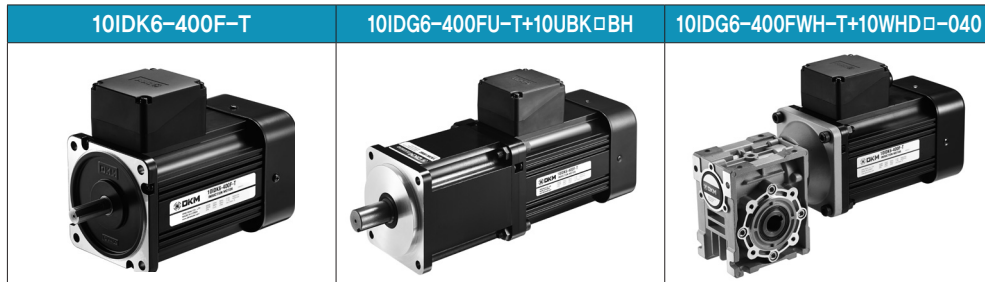
KEY SPEC

GEARBOX

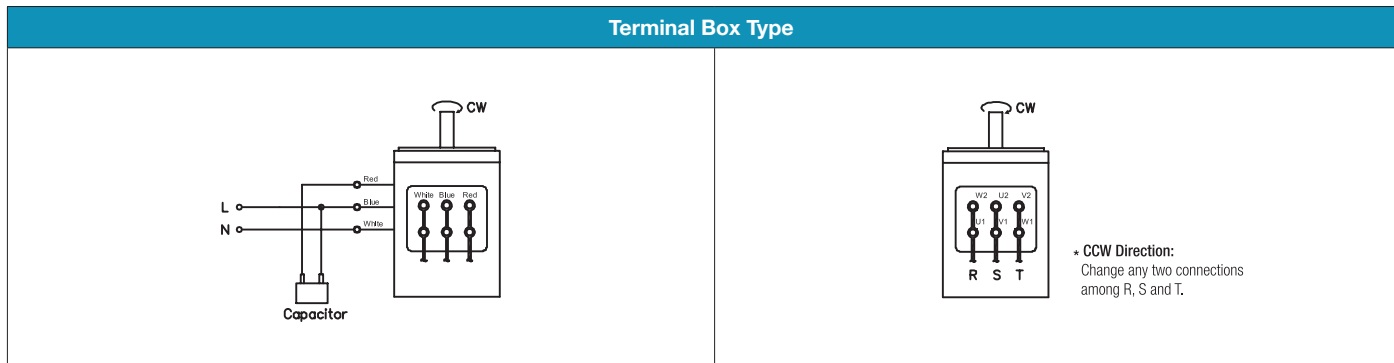
B AC Motors

Induction Motor 400W(□104mm)

Motor Images



Connection Diagrams



- 1) The direction of motor rotation is as viewed from the shaft end of the motor.
- 2) CW represents the clockwise direction, while CCW represents the counterclockwise direction.