

B AC Motors

Induction Motor 250W(□104mm)

250W

Induction Motor
250W(□104mm)

Motor Specification

Model		Output W	Voltage V	Frequency Hz	Poles	Duty	Starting Torque		Rated Load			Capacitor μF / VAC	
Lead Wire Type	Terminal Box Type						kgfcm	N.m	Speed r/min	Current A	Torque kgfcm N.m		
-	10IDGE-250F□-T	250	1∅ 220	50	4	Cont.	11.00	1,100	1250	2.29	19.48	1.948	13.0/450
			1∅ 240				13.50	1,350	1300	2.17	18.74	1.874	

1) Enter the phase & voltage code in the place * and enter the model type of attaching gearbox in the box (□) within the motor model name.

2) voltage code E & D contain a built-in thermal protector.

3) Gear Type Shaft is for attaching gearbox and D-Cut & Key Type Shafts are for using motor only.

Max. Permissible Torque at Output Shaft of Gearbox

50Hz

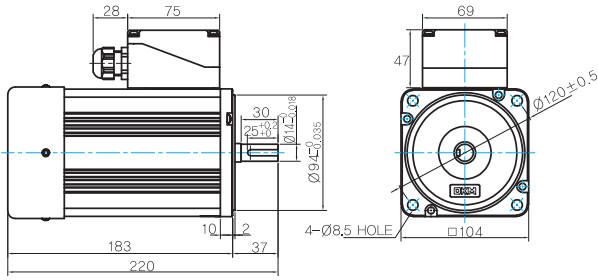
Motor Model	Gearbox Model	Ratio r/min	3	3.6	5	6	7.5	9	10	12.5	15	18	20	25	30	36	40	50	60	75	90	100	120	150	180	
			kgfcm	600	500	360	300	240	200	180	144	120	100	90	72	60	50	45	36	30	24	20	18	15	12	10
10IDGE-250FU-T	10UBK□BH	kgfcm	50	60	80	100	120	145	150	185	220	240	270	300	300	350	350	350	400	400	400	400	400	400	400	400
		N.m	4.9	5.9	7.8	9.8	12	14	15	18	22	24	26	29	29	34	34	34	39	39	39	39	39	39	39	39

Motor Model	Gearbox Model	Gear Ratio r/min	7.5	10	15	20	25	30	40	50	60	80	100
			kgfcm	200	150	100	75	60	50	37.5	30	25	18.75
10IDGE-250WH-T	10WHD□-040	kgfcm	100	130	190	240	290	325	305	*	*	*	*
		N.m	9.8	12.7	18.6	23.5	28.4	31.8	29.9	*	*	*	*

Dimensions

MOTOR ONLY

MOTOR MODEL:
10IDK□-250F-T



MOTOR OUTPUT SHAFT

MODEL	SPEC
KEY TYPE	

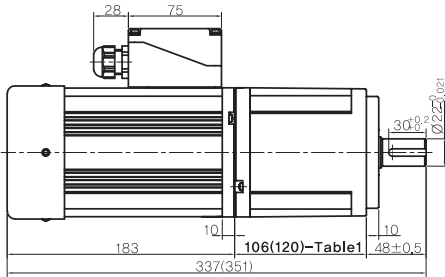
KEY SPEC

MOTOR

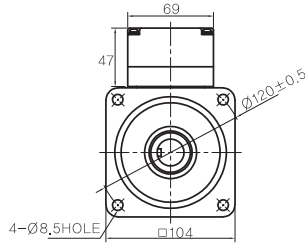
GEARED MOTOR

U TYPE GEARBOX

MOTOR MODEL:
10IDG□-250FU-T



GEARBOX MODEL:
10UBK□BH



GEARBOX OUTPUT SHAFT

MODEL	SPEC
KEY TYPE	

KEY SPEC

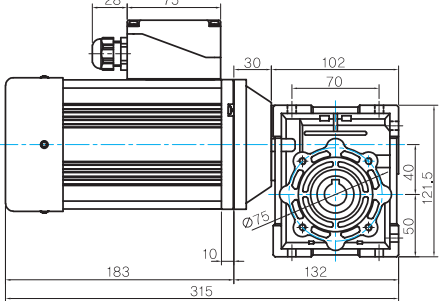
GEARBOX

106(120)-Table1

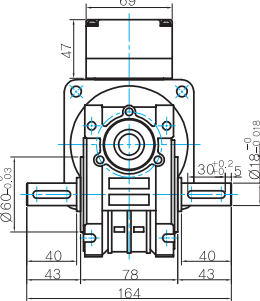
SIZE(mm)	GEAR RATIO
106	10UBK3BH - 10UBK60BH
120	10UBK75BH - 10UBK180BH

WH TYPE GEARBOX

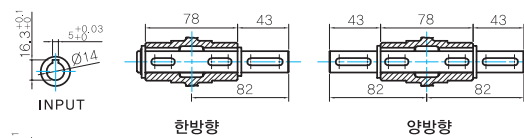
MOTOR MODEL:
10IDG□-250FWH-T



GEARBOX MODEL:
10WHD□-040



SHAFT

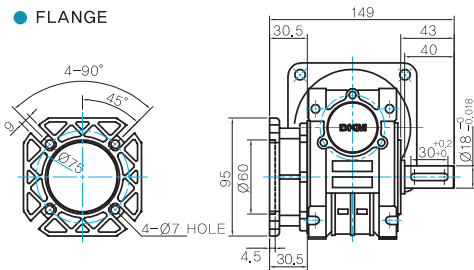


WEIGHT

PART	WEIGHT(Kg)	
MOTOR	6.1	
GEAR BOX	10UBK3BH ~ 10UBK10BH	2.1
	10UBK12.5BH ~ 10UBK18BH	2.15
	10UBK20BH ~ 10UBK60BH	2.2
	10UBK75BH ~ 10UBK200BH	2.3
	10WHD□-040	2.2

* 출력 FLANGE와 SHAFT는 별매입니다.

FLANGE



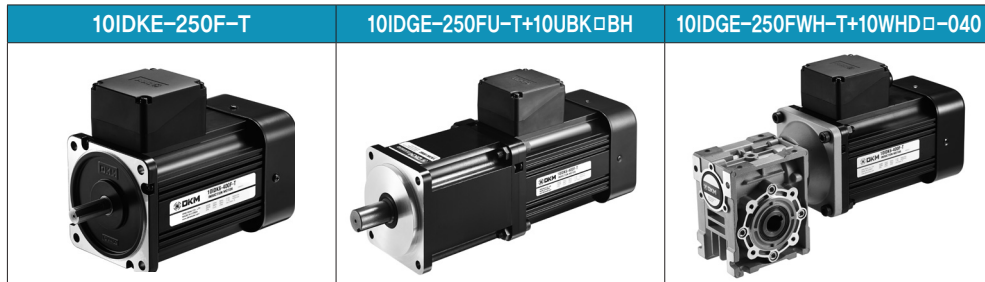
KEY SPEC

GEARBOX

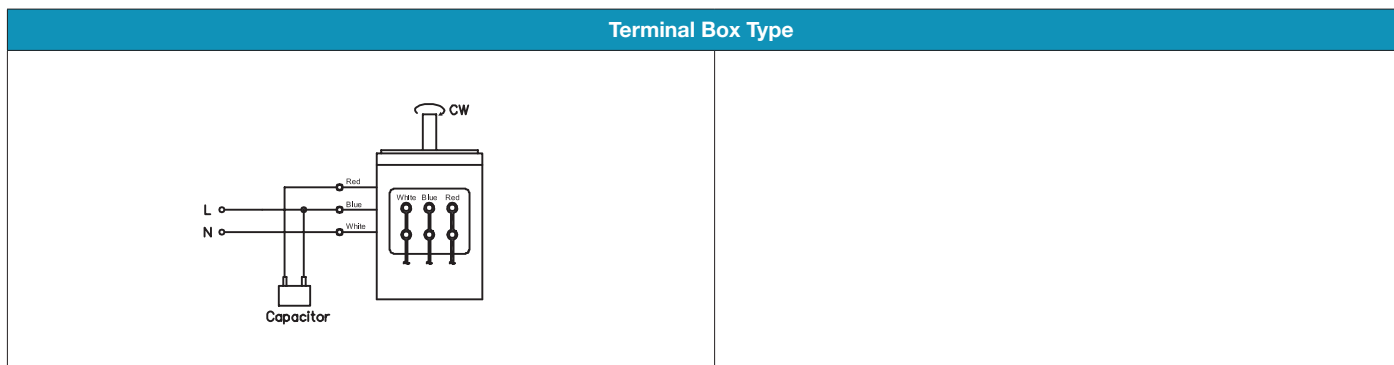
B AC Motors

Induction Motor 250W(□104mm)

Motor Images



Connection Diagrams



- 1) The direction of motor rotation is as viewed from the shaft end of the motor.
- 2) CW represents the clockwise direction, while CCW represents the counterclockwise direction.